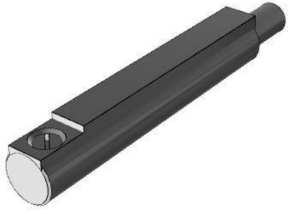


# K-REED-SCHALTER D

Reed switch D



Elektriskā ieeja  
axial  
Sērija  
D  
Kabeļa garums  
3 m

## Apraksts

Reed switch, series D-A93, direct mounting in round profile groove, version: electrical input port axial, with LED, with cast-in cable, cable length 3.0 m

## Produkts

Apzīmējums	Definīcija	Modelis
K- 07 50 00 01	Reed-switch with LED, with grommet, without connector	
K- 07 50 00 02	Reed-switch with LED, with M8 connector (3 pin)	