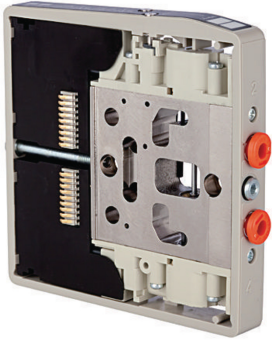


# K-VENTILSCHEIBE HDM 4

Valve discs for HDM valve terminal with 4 mm port



Darba vides  
Filtered, unlubricated or lubricated compressed air. If lubrication is used, it must be continuous.

Darba spiediens  
Max. vacuum 10 bar (external pilots), 3 to 7 bar (internal pilots as standard)

Regulēšanas spiediens  
3 - 7 bar

Temperatūras diapazons  
-10 °C to +60 °C

Aizsardzības veids  
IP 65

Caurpl\_de nom.  
200 l/min

Jaudas patēriņš  
0.6 W per pilot

Manuāla palīgvadība  
Latching (bistable), Monostable (non-latching) version also available on request

Vadību skaits  
Max. 16 (e.g. 16 spring return valves)

## Apraksts

These compact valve terminals, with a maximum flow rate of 800 Nl/min, can be individually adapted to the specific conditions of each application thanks to the wide range of functions and various input and intermediate plates. Since each valve terminal is a customer-specific combination of a series of individual elements, the catalogue only lists the available input, intermediate and end plates as well as the different valve discs and the 25-pin multi-pole connectors.

## Norādīt

Citi dati pieejami pēc pieprasījuma.

## Produkts

Apzīmējums	Funkcija
K- 07 15 20 53	2 x 3/2-way, NC, monostable or 5/3-way, mid-position exhausted
K- 07 15 20 58	2 x 3/2-way, NO, monostable or 5/3-way, mid-position pressurised
K- 07 15 20 55	3/2-way, NC, monostable and 3/2-way, NO, monostable
K- 07 15 20 57	5/2-way, monostable
K- 07 15 20 52	5/2-way, monostable (uses only one pin, two signals assigned)
K- 07 15 20 54	5/2-way, bistable (pulse valve)
K- 07 15 20 56	5/3-way, mid-position closed