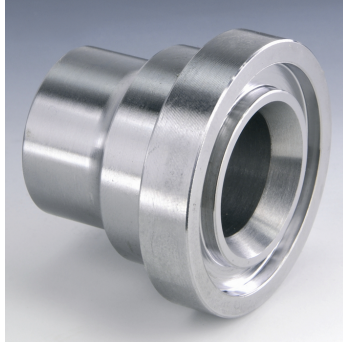


Piemetināma SAE kopa



Spiediena sērija  
3000 psi  
Konstrukcija  
Taisna  
Modelis  
Piemetināma SAE kopa  
Piegādes apjoms  
tikai iepriekšējas metināšanas kopa  
Standarts  
SAE J 518 C  
ISO 6162  
ISO 6162  
Materiāls  
S355J2G3 (ST52.3)

## Norādīt

Norādītais maksimālais ekspluatācijas spiediens attiecas uz atloku! Reālo ekspluatācijas spiedienu nosaka caurule (sieniņu biezums) un tās kvalitāte!  
Ieteicamās skrūves ir norādītas ailēs M (metriskās) vai M (collu).

## Produkts

Apzīmējums	PB 10.9 bar	Caurule	Tipizmērs	A mm	C mm	F mm	G mm	L mm	Ø B mm	D mm	E mm	M collas	M metr.	L zemsv. piez.	M metr. piez.
SFS 3001 S 16	350	16 x 2	1/2"	16.0	38.1	45.6	41	8.5	12.0	54	17.5	5/16" x 1.1/4"	M 8 x 30	-	-
SFS 3001-21.3	350	21.3 x 4.7	1/2"	22.0	38.1	45.6	41	8.5	15.5	54	17.5	5/16" x 1.1/4"	M 8 x 30	-	-
SFS 3002-25	350	25 x 3	3/4"	27.0	47.6	51.8	50	10.5	18.9	65	22.2	3/8" x 1.1/4"	M 10 x 30	-	-
SFS 3002-26.9	350	26.9 x 3.9	3/4"	27.0	47.6	51.8	50	10.5	18.9	65	22.2	3/8" x 1.1/4"	M 10 x 30	-	-
SFS 3003-28	315	28 x 3	1"	28.0	52.4	58.4	50	10.5	22.0	70	26.2	3/8" x 1.1/4"	M 10 x 35	-	-
SFS 3003-30	315	30 x 4	1"	30.0	52.4	58.4	50	10.5	22.0	70	26.2	3/8" x 1.1/4"	M 10 x 35	-	-
SFS 3003-33.7	315	33.7 x 4.5	1"	35.0	52.4	58.4	50	10.5	24.7	70	26.2	3/8" x 1.1/4"	M 10 x 35	-	-
SFS 3003-38	315	38 x 5	1"	38.0	52.4	58.4	50	10.5	28.0	70	26.2	3/8" x 1.1/4"	M 10 x 35	-	-
SFS 3004-38	250	38 x 5	1.1/4"	38.0	58.7	72.6	55	-	28.0	79	30.2	7/16" x 1.1/2"	*2	= pēc izvēles 10,5 vai 12,5	= pēc izvēles 10 x 30 vai x 35
SFS 3004-42.4	250	42.4 x 6.3	1.1/4"	43.0	58.7	72.6	55	-	29.7	79	30.2	7/16" x 1.1/2"	*2	= pēc izvēles 10,5 vai 12,5	= pēc izvēles 10 x 30 vai x 35
SFS 3005-38	200	38 x 4	1.1/2"	38.0	69.9	82.2	57	13.5	30.0	94	35.7	1/2" x 1.1/2"	M 12 x 35	-	-
SFS 3005-42	200	42 x 5	1.1/2"	42.0	69.9	82.2	57	13.5	32.0	94	35.7	1/2" x 1.1/2"	M 12 x 35	-	-
SFS 3005-45	200	45 x 5	1.1/2"	45.0	69.9	82.2	57	13.5	35.0	94	35.7	1/2" x 1.1/2"	M 12 x 35	-	-
SFS 3005-48.3	200	48.3 x 7.1	1.1/2"	49.0	69.9	82.2	57	13.5	34.0	94	35.7	1/2" x 1.1/2"	M 12 x 35	-	-
SFS 3006-55	200	55 x 5	2"	55.0	77.8	96.4	57	13.5	45.0	102	42.9	1/2" x 1.1/2"	M 12 x 35	-	-
SFS 3006-60.3	200	60.3 x 8	2"	60.3	77.8	96.4	57	13.5	44.0	102	42.9	1/2" x 1.1/2"	M 12 x 35	-	-
SFS 3007-65	160	65 x 6	2.1/2"	65.0	88.9	108.2	58	13.5	53.0	114	50.8	1/2" x 1.3/4"	M 12 x 40	-	-
SFS 3007-70	160	70 x 7.5	2.1/2"	70.0	88.9	108.2	58	13.5	55.0	114	50.8	1/2" x 1.3/4"	M 12 x 40	-	-

Apzīmējums	PB 10.9 bar	Caurule	Tipizmērs	A mm	C mm	F mm	G mm	L mm	Ø B mm	D mm	E mm	M collas	M metr.	L zemsv. piez.	M metr. piez.
SFS 3007-76.1	160	76.1 x 7.1	2.1/2"	74.0	88.9	108.2	58	13.5	62.0	114	50.8	1/2" x 1.3/4"	M 12 x 40	-	-
SFS 3008-80	138	80 x 6	3"	80.0	106.4	130.6	60	16.7	68.0	135	61.9	5/8" x 2"	M 16 x 45	-	-
SFS 3008-88.9	138	88.9 x 8	3"	90.0	106.4	130.6	60	16.7	73.0	135	61.9	5/8" x 2"	M 16 x 45	-	-
SFS 3009-100	35	100 x 6	3.1/2"	100.0	120.7	139.0	60	17.0	88.0	152	69.9	5/8" x 2"	M 16 x 45	-	-
SFS 3009-88.9	35	88.9 x 8	3.1/2"	90.0	120.7	139.0	60	17.0	73.0	152	69.9	5/8" x 2"	M 16 x 45	-	-
SFS 3010-110	35	110 x 6	4"	110.0	130.2	152.0	60	17.0	98.0	162	77.8	5/8" x 2"	M 16 x 50	-	-
SFS 3010- 114.3	35	114.3 x 8.8	4"	115.0	130.2	152.0	60	17.0	96.7	162	77.8	5/8" x 2"	M 16 x 50	-	-
SFS 3011-133	35	133 x 6.5	5"	133.0	152.4	180.0	60	17.0	120.0	184	92.1	5/8" x 2"	M 16 x 50	-	-
SFS 3011- 139.7	35	139.7 x 10	5"	140.0	152.4	180.0	60	17.0	120.0	184	92.1	5/8" x 2"	M 16 x 50	-	-

PN = nominālais spiediens PB = maks. ekspluatācijas spiediens