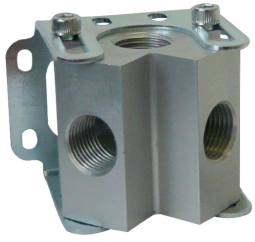


K-ENDVERT 2-FACH WAND 20-63

INFI

2-fold terminal distributor Ø 20 mm - Ø 63 mm with wall bracket



Ekspluatācijas spiediens
-0,99 bar - 15 bar
Temperatūras diapazons
-20 °C to +80 °C
Korpuss
Nickel-plated brass
Uzgrieznis
Nickel-plated brass

Produkts

Apzīmējums	A mm	B mm	C mm	D mm	E mm	F1	F2	G mm	H mm	Ieejas pieslēgums	Izejas pieslēgums	L maks mm	L min mm
K- 07 40 54 16	87.0	73.0	48.5	72	29.5	G 1/2	G 1/2	5	28.5	G 1/2	G 1/2	60	35
K- 07 40 54 17	87.0	73.0	48.5	72	29.5	G 3/4	G 1/2	5	28.5	G 3/4	G 1/2	60	35