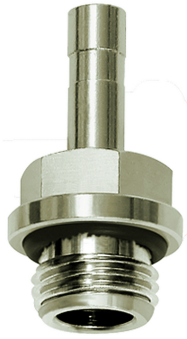


Push-in plug, parallel male thread with O-ring



Darba spiediens
Max. 16 bar
Eksploatācijas temperatūra
-20 °C to +80 °C
Materiāls
Niķelēts misiņš
Blīvgredzens
NBR
Iespilēšanas gredzens
Stainless steel
Piespiedējgredzens
Hostaform

Apraksts

The advanced version of our highly successful push-in fittings series manufactured in nickel-plated brass. Advantages of this new, optimised series: Much easier connection and disconnection of the hose, even with repeated mounting, can also be used for non-calibrated hoses, suitable for vacuum operation.

Norādīt

Citi dati pieejami pēc pieprasījuma.

Produkts

Apzīmējums	Vītnes	L1 mm	Šļūtenes ārējais Ø	SW
K- 07 40 47 32	M 5	17.1	3 mm	5 mm
K- 07 40 47 33	M 5	25.2	4 mm	8 mm
K- 07 40 47 34	M 5	25.2	5 mm	8 mm
K- 07 40 47 35	M 5	25.7	6 mm	9 mm
K- 07 40 47 45	G 1/8	28.9	4 mm	13 mm
K- 07 40 47 46	G 1/8	28.9	5 mm	13 mm
K- 07 40 47 47	G 1/8	29.4	6 mm	13 mm
K- 07 40 47 48	G 1/8	30.6	8 mm	13 mm
K- 07 40 47 41	G 1/4	32.4	4 mm	14 mm
K- 07 40 47 42	G 1/4	32.4	5 mm	14 mm
K- 07 40 47 43	G 1/4	32.9	6 mm	14 mm
K- 07 40 47 44	G 1/4	34.0	8 mm	14 mm
K- 07 40 47 39	G 1/4	38.2	10 mm	14 mm
K- 07 40 47 40	G 1/4	40.7	12 mm	14 mm
K- 07 40 47 52	G 3/8	35.4	8 mm	17 mm
K- 07 40 47 49	G 3/8	38.7	10 mm	17 mm
K- 07 40 47 50	G 3/8	42.2	12 mm	17 mm
K- 07 40 47 51	G 3/8	46.2	14 mm	17 mm
K- 07 40 47 36	G 1/2	41.0	10 mm	19 mm
K- 07 40 47 37	G 1/2	44.2	12 mm	22 mm
K- 07 40 47 38	G 1/2	48.2	14 mm	22 mm