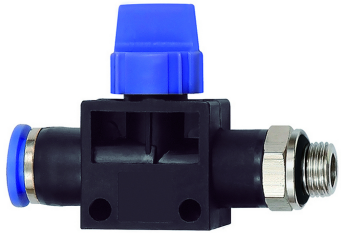


# K-WV 3/2 STECK GEW SCHL

**HANSA FLEX**

OFICIĀLĀ LATVIJAS PĀRSTĀVniecība

3/2-way pilot valves with male thread and plug connection, flow direction from port to tube,  
parallel male thread with O-ring



Darba spiediens

Max. 15 bar, coarse vacuum

Darba vides

Compressed air and all gases or liquids that are compatible with the materials

ieteicamās šļūtenes

PU or PA (nylon)

Pieteikums platība

Air, vacuum

Temperatūras diapazons

-20 °C to +80 °C

Blīvēšanas virsma

Parallel version: O-ring in housing, Conical version: thread coating

Materiāls

Plastic, Nickel plated brass

Piespiedējgredzens

Plastic

## Apraksts

Push-in fittings series manufactured in plastic and nickel-plated brass. All parts are suitable for use with hoses, tubes or pipes made of plastic and copper.

## Norādīt

Citi dati pieejami pēc pieprasījuma.

## Produkts

Apzīmējums	Vītnes	L1 mm	L2 mm	šļūtenes ārējais Ø	SW
K- 07 40 43 85	G 1/8	58.1	41.5	6 mm	14 mm
K- 07 40 43 86	G 1/8	58.5	41.5	8 mm	14 mm
K- 07 40 43 83	G 1/4	59.6	41.5	6 mm	14 mm
K- 07 40 43 84	G 1/4	60.0	41.5	8 mm	17 mm
K- 07 40 43 81	G 1/4	70.9	46.0	10 mm	17 mm
K- 07 40 43 82	G 1/4	70.9	46.0	12 mm	21 mm
K- 07 40 43 89	G 3/8	61.1	41.5	6 mm	14 mm
K- 07 40 43 90	G 3/8	61.5	41.5	8 mm	17 mm
K- 07 40 43 87	G 3/8	72.4	46.0	10 mm	20 mm
K- 07 40 43 88	G 3/8	71.9	46.0	12 mm	21 mm
K- 07 40 43 79	G 1/2	74.9	46.0	10 mm	24 mm
K- 07 40 43 80	G 1/2	75.4	46.0	12 mm	24 mm