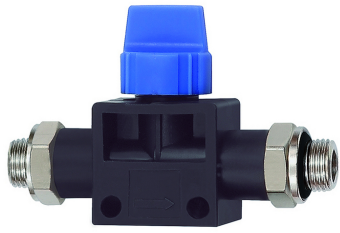


K-WV 3/2 AG OR

3/2-way pilot valves with parallel male thread with O-ring



Darba spiediens
Max. 15 bar, coarse vacuum
Darba vides
Compressed air and all gases or liquids that are compatible with the materials
ieteicamās šļūtenes
PU or PA (nylon)
Pieteikums platība
Air, vacuum
Temperatūras diapazons
-20 °C to +80 °C
Blīvēšanas virsma
Parallel version: O-ring in housing, Conical version: thread coating
Materiāls
Plastic, Nickel plated brass
Piespiedējgredzens
Plastic

Apraksts

Push-in fittings series manufactured in plastic and nickel-plated brass. All parts are suitable for use with hoses, tubes or pipes made of plastic and copper.

Norādot

Citi dati pieejami pēc pieprasījuma.

Produkts

Apzīmējums	L1 mm	L2 mm	Vītne 1	Vītne 2
K- 07 40 46 28	65.0	41.5	G 1/8	G 1/8
K- 07 40 46 27	68.0	41.5	G 1/4	G 1/4
K- 07 40 46 29	81.5	46.0	G 3/8	G 3/8