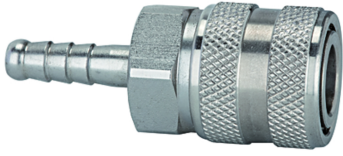


K-SVKM NW 7,2 SCHL-TUE VA

Quick disconnect couplings DN 7.2, stainless steel, with hose stem



Ekspluatācijas spiediens
1 - 35 bar and rough vacuum
Vielas temperatūra
-25 °C to +200 °C
Korpuss, uzdeva, vārsta korpuss
Stainless steel 1.4305
Atspere, sprostgredzens
Stainless steel 1.4310
Fiksācijas tapas
Stainless steel 1.4401
Blīvējums
FKM

Apraksts

Classic standard coupling type, one side sealing, made of stainless steel. The closed sleeve protects the coupling from dirt. We recommend the use of stainless steel plugs and stems!

Norādīt

Citi dati pieejami pēc pieprasījuma.

Produkts

Apzīmējums	Caurpl_de nom. l/min	Garums mm	Savienojums	SW mm
K- 07 35 07 65	1000	59.0	Stem, I.D. 6	22
K- 07 35 12 65	1000	59.0	Stem, I.D. 8	22
K- 07 35 07 66	1000	59.0	Stem, I.D. 9	22
K- 07 35 12 66	1000	59.0	Stem, I.D. 10	22
K- 07 35 07 67	1000	59.0	Stem, I.D. 13	22