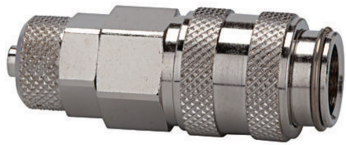


K-SVKM NW 5 SCHL MS NI1

Quick disconnect couplings DN 5, nickel-plated brass with hose connector



Ekspluatācijas spiediens
0 - 35 bar, maximum static working pressure (non-pulsating)
Vielas temperatūra
-20 °C to +100 °C
Korpuss, uzdeva, vārsta korpuss
Nickel-plated brass
Atspere, sprostgredzens, lodes
Stainless steel
Blīvējums
NBR

Apraksts

One-hand quick disconnect couplings, one side sealing, compact with a large bore and only a small pressure drop. Ideal for: Pneumatic tools, pneumatic applications, medical equipment, instrumentation and control, laboratory, chemical applications, analysis, metering techniques.

Norādīt

Citi dati pieejami pēc pieprasījuma.

Produkts

| Apzīmējums | Caurpl_de nom. l/min | Garums mm | Savienojums | SW mm |
|----------------|-------------------------|--------------|-----------------------|----------|
| K- 07 35 06 65 | 560 | 43.0 | Hose connection 6 x 4 | 14 |
| K- 07 35 06 66 | 560 | 43.0 | Hose connection 8 x 6 | 14 |