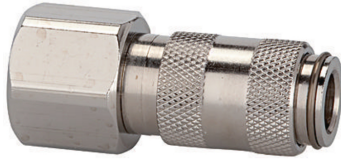


K-SVKM NW 2,7 IG VA

Quick disconnect couplings DN 2.7, stainless steel 1.4404, female



Ekspluatācijas spiediens
0 - 35 bar, maximum static working pressure (non-pulsating)
Vielas temperatūra
-15 °C to +200 °C
Korpuss, uzdeva, vārsta korpuss
Stainless steel 1.4404
Atspere, sprostgredzens, lodes
Stainless steel 1.4404
Blīvējums
FKM

Apraksts

One-hand quick disconnect couplings, one side sealing, extremely compact with a large bore and only a small pressure drop. Ideal for: Medical equipment, chemical and pharmaceutical industry, laboratories, plant construction and butchers.

Norādīt

Citi dati pieejami pēc pieprasījuma.

Produkts

Apzīmējums	Caurpl_de nom. l/min	Garums mm	Savienojums	SW mm
K- 07 35 12 47	165	25.0	M 5 female	9
K- 07 35 12 48	165	28.0	G 1/8 female	12