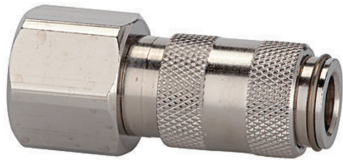


# K-SVKM NW 2,7 IG MS NI

Quick disconnect couplings DN 2.7, nickel-plated brass, female

**HANSA FLEX**  
OFICIĀLĀ LATVIJAS PĀRSTĀVNIECĪBA



Ekspluatācijas spiediens  
0 - 35 bar, maximum static working pressure (non-pulsating)  
Vielas temperatūra  
-20 °C to +100 °C  
Korpuss, uzmava, vārsta korpuss  
Nickel-plated brass  
Atspere, sprostgredzens, lodes  
stain less steel  
Blīvējums  
NBR

## Apraksts

One-hand quick disconnect coupling, one side sealing, extremely compact, with a large bore and a small pressure drop. Ideal for: Medical & Dental equipment, instrumentation and control, laboratory equipment, chemical applications, small tools, analysis, miniature pneumatics, engineering.

## Norādīt

Citi dati pieejami pēc pieprasījuma.

## Produkts

| Apzīmējums     | Caurpl_de nom.<br>l/min | Garums<br>mm | Savienojums  | SW<br>mm |
|----------------|-------------------------|--------------|--------------|----------|
| K- 07 35 06 20 | 165                     | 25.0         | M 5 female   | 9        |
| K- 07 35 06 21 | 165                     | 28.0         | G 1/8 female | 12       |