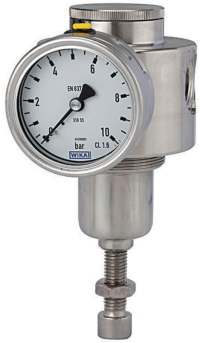


K-DRG FL RUECKSTERERBAR M MANO VA

Non-reversible, stainless steel pressure regulators for liquid media, stainless steel pressure gauge



Ieejas spiediens
Max. 30 bar (Control range 0.5 - 8.0 bar), Max. 50 bar (Control range 1.0 - 15.0 bar)
Vides temperatūra
Max. 80 °C
Vielas temperatūra
max. 80 °C
Caurplūde
At P1 = 8 bar, P2 = 6 bar and pressure drop $\Delta p \leq 1$ bar
Blīvējums
FKM
Materiāls
stainless steel 1.4404 (AISI 316L)
Membrāna
PTFE on NBR base
Caurplūdes vērtības mērijums
At P1 = 8 bar, P2 = 6 bar and pressure drop $\Delta p \leq 1$ bar

Apraksts

Stainless steel regulators containing no non-ferrous metals for use in the food processing, chemical, mining, plant construction and special machinery industries as well as in the medical technology.

Norādīt

Citi dati pieejami pēc pieprasījuma.

Produkts

| Apzīmējums | Vitnes | Regulēšanas diapazons | Caurpl_de nom. l/min | A mm | B | C mm | D mm |
|----------------|--------|-----------------------|-------------------------|---------|----------|---------|---------|
| K- 07 25 02 10 | G 1/4 | 0.5 - 8.0 bar | 200 | 65.0 | 162.0 mm | 37.0 | 125.0 |
| K- 07 25 02 11 | G 1/4 | 1.0 - 15.0 bar | 330 | 65.0 | 162.0 mm | 37.0 | 125.0 |
| K- 07 25 02 08 | G 1/2 | 0.5 - 8.0 bar | 660 | 80.0 | 164.0 mm | 37.0 | 127.0 |
| K- 07 25 02 09 | G 1/2 | 1.0 - 15.0 bar | 1800 | 80.0 | 164.0 mm | 37.0 | 127.0 |