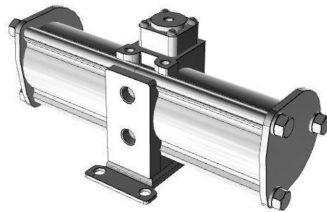


Darba vides
 Saspiests gaiss
 min. ekspluatācijas spiediens
 0.20 MPa
 maks. ieejas spiediens
 0,1 to 1,0 MPa
 Pneimatisko manometru pieslēgumu skaits
 2
 Pneimatiskā manometra pieslēgums
 Rc 1/8
 Vides temperatūra
 +2 °C bis +50 °C
 Vielas temperatūra
 +2 °C to +50 °C



Apraksts

Booster regulator, series VBA, increases pressure only where the force is inadequate because of a low network pressure (energy saving measure), no electricity supply necessary, longer service life: doubled compared to conventional model, lower operating noise level: 13 dB (A), improved operational reliability from inbuilt mesh filter on (IN connection) compressed air inlet, reduced condensation levels: air exhaust channels integrated directly into the cylinder tube, suitable for: compressed air, size 1/4, with pressure gauge and silencer, elbow, pneumatic connection: G 1/4, pneumatic connection pressure gauge: G 1/8, pneumatic connections pressure gauge: 2, flow rate 230 l/min, pressure boost 1:2, manually actuated pressure adjustment mechanism, test pressure: 3 MPa, max. operating pressure: 2 MPa, min. operating pressure: 0.2 MPa, media temperature: +2 to +50 °C, ambient temperature: +2 to +50 °C

Produkts

Apzīmējums	Pneimatisko manometru pieslēgumu skaits	Pneimatiskais pieslēgums	Caurpl_de nom. l/min	Izmēģinājuma spiediens MPa	maks. ekspluatācijas spiediens MPa	Spiediena iestatišanas mehānisms	Spiediena pastiprināšanas process	T
K- 07 60 00 06	2	G 1/4	70	3.00	2.00	manually operated	1:2 to 1:4	1/4
K- 07 60 00 01	2	G 1/4	230	3.00	2.00	manually operated	1:2	1/4
K- 07 60 00 08	2	G 3/8	1000	1.50	1.00	manually operated	1:2	3/8
K- 07 60 00 12	2	G 3/8	1000	1.50	1.00	pneumatically actuated	1:2	3/8
K- 07 60 00 13	2	G 1/2	1900	1.50	1.00	manually operated	1:2	1/2
K- 07 60 00 14	2	G 1/2	1900	1.50	1.00	pneumatically actuated	1:2	1/2
K- 07 60 00 15	2	G 1/2	1600	2.40	1.60	manually operated	1:2	1/2